

# GN 723.4 | Knurled control knobs

Aluminium



- 1
- 2
- 3
- 4
- 5
- 6
- 7
- 8
- 9
- 10
- 11
- 12
- 13
- 14
- 15
- 16
- 17
- 18

## MATERIAL

Knurled anodised aluminium in natural colour.

## STANDARD EXECUTIONS

H8 reamed hole. Assembly by means of a supplied stainless steel transversal grub screw with hexagon socket.

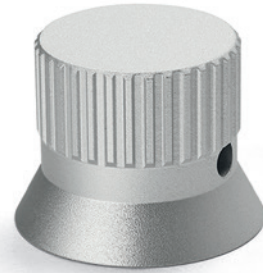
- **GN 723.4-N**: plain knob.
  - **GN 723.4-M**: knob with triangular index.
  - **GN 723.4-S**: knob with standard graduation, 20 marks, numbering from 0 to 9 increases as the knob is turned clockwise.
- Laser-engraved precision graduations.

## ACCESSORIES

Flanges are available to optimise use of GN 723.4 knurled knobs GN 723.3 (see page 693).

## SPECIAL EXECUTIONS ON REQUEST

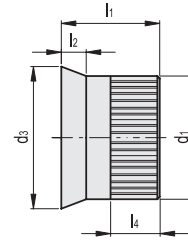
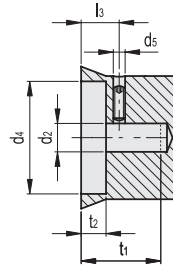
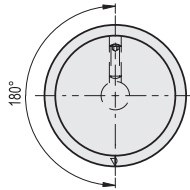
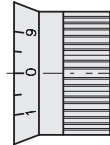
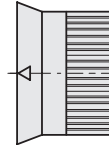
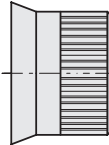
Different Graduations (see page 703).



GN 723.4-N

GN 723.4-M

GN 723.4-S



Conversion Table	
1 mm = 0.039 inch	
d1	
mm	inch
27	1.06
34	1.34
42	1.65

## GN 723.4-N

Code	Description	d1	d2 H8	d5	d3-0.2	d4	l1	l2	l3	l4	t1	t2	⚖️
GN.38472	GN 723.4-27-B6-N	27	6	M4	33.5	23.5	25.5	7.5	10.5	12.5	23.5	7.5	40
GN.38482	GN 723.4-34-B6-N	34	6	M5	41	29.5	29.5	9.5	13.5	13	26.5	9.5	60
GN.38487	GN 723.4-34-B8-N	34	8	M5	41	29.5	29.5	9.5	13.5	13	26.5	9.5	53
GN.38492	GN 723.4-42-B8-N	42	8	M5	49.5	37.5	33.5	10.5	15.5	15	30.5	11.5	100
GN.38497	GN 723.4-42-B10-N	42	10	M5	49.5	37.5	33.5	10.5	15.5	15	30.5	11.5	80

## GN 723.4-M

Code	Description	d1	d2 H8	d5	d3-0.2	d4	l1	l2	l3	l4	t1	t2	⚖️
GN.38471	GN 723.4-27-B6-M	27	6	M4	33.5	23.5	25.5	7.5	10.5	12.5	23.5	7.5	40
GN.38481	GN 723.4-34-B6-M	34	6	M5	41	29.5	29.5	9.5	13.5	13	26.5	9.5	60
GN.38486	GN 723.4-34-B8-M	34	8	M5	41	29.5	29.5	9.5	13.5	13	26.5	9.5	53
GN.38491	GN 723.4-42-B8-M	42	8	M5	49.5	37.5	33.5	10.5	15.5	15	30.5	11.5	100
GN.38496	GN 723.4-42-B10-M	42	10	M5	49.5	37.5	33.5	10.5	15.5	15	30.5	11.5	80

## GN 723.4-S

Code	Description	d1	d2 H8	d5	d3-0.2	d4	l1	l2	l3	l4	t1	t2	⚖️
GN.38473	GN 723.4-27-B6-S	27	6	M4	33.5	23.5	25.5	7.5	10.5	12.5	23.5	7.5	40
GN.38483	GN 723.4-34-B6-S	34	6	M5	41	29.5	29.5	9.5	13.5	13	26.5	9.5	53
GN.38488	GN 723.4-34-B8-S	34	8	M5	41	29.5	29.5	9.5	13.5	13	26.5	9.5	66
GN.38493	GN 723.4-42-B8-S	42	8	M5	49.5	37.5	33.5	10.5	15.5	15	30.5	11.5	100
GN.38498	GN 723.4-42-B10-S	42	10	M5	49.5	37.5	33.5	10.5	15.5	15	30.5	11.5	80